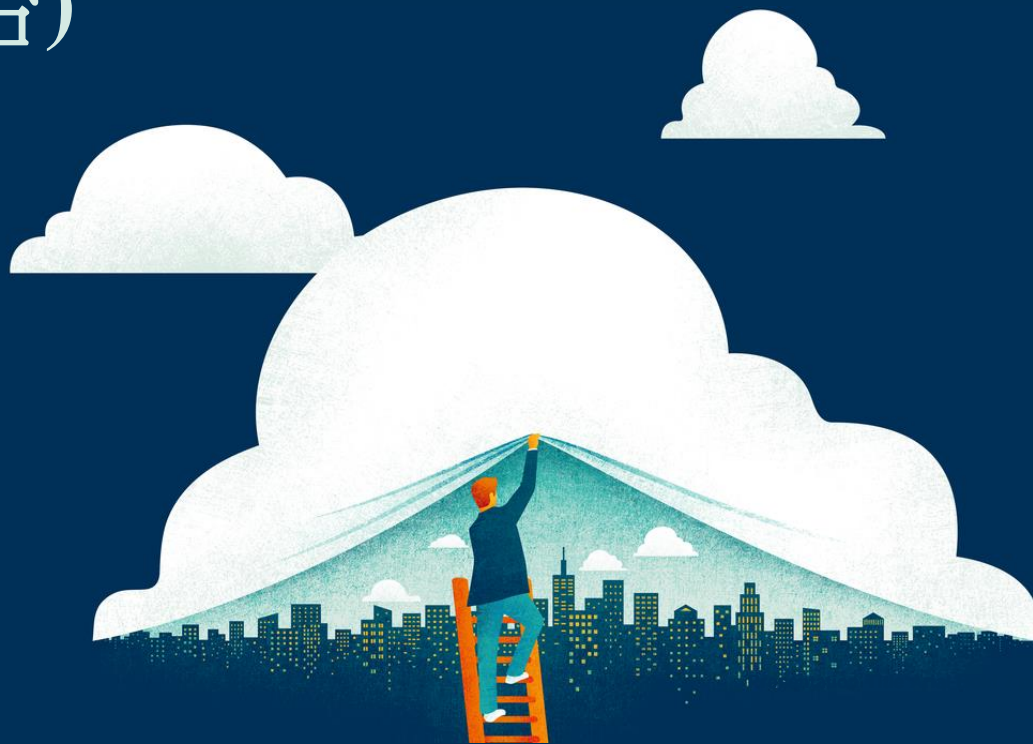


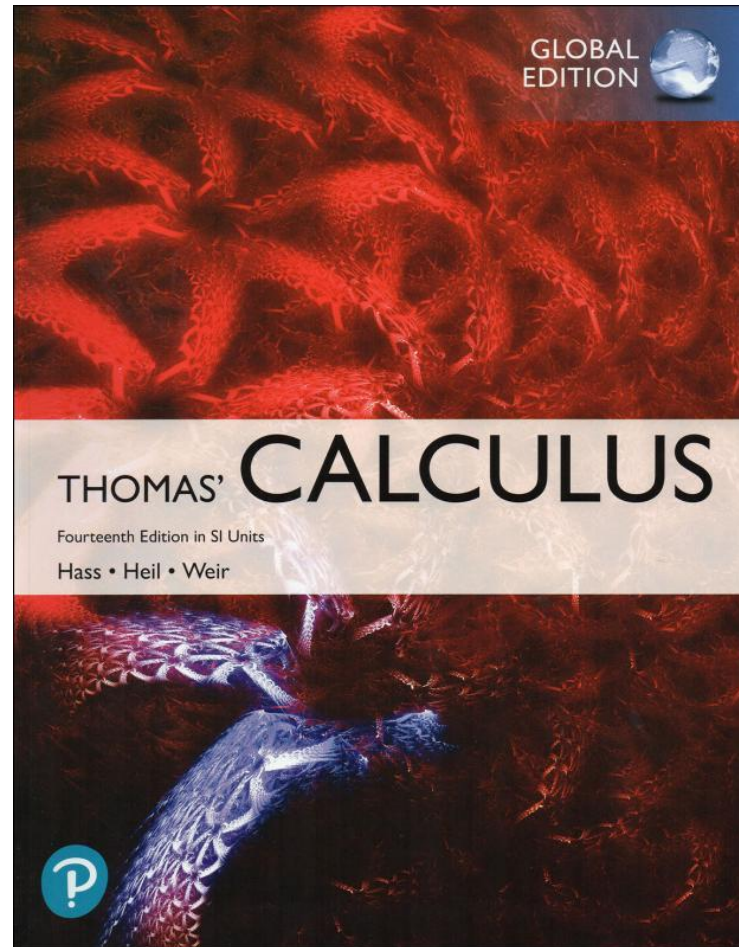
Calculus MyLab (微積分教學平台)

May 26, 2022



Thomas' Calculus 14e

ISBN : 9781292253220



Logging into MyLab & Mastering

如何登入MyMathLab 教學平台

1.

Logging into MyLab & Mastering

1. Go to mlm.pearson.com/global/ 或 搜尋 Pearson mylab
2. Click **Sign in**

 Pearson | MyLab | Mastering

 BROWSE BY DISCIPLINE

Improving results

Our goal is to help every student succeed. We're working with educators and institutions to improve results for students everywhere.

[Learn more](#)

Educators >

Results

Features

Training & Support

Students >

Get Registered

Support

More...

Academic Executives >

Results

Features

More...

Sign In

Already registered? Sign in with your

 [Sign in](#)

Register

Need access? Start here!

 [Student](#)

 [Educator](#)

Engage students effectively with immersive content, tools, and experiences

Logging into MyLab & Mastering

1. Enter your **Username** and **Password**

Username : 學號

Password : NCU***** (*****為學號後五碼)

2. Click **Sign In**

ALWA

Sign In

Username

Password

Show Password

[Forgot Username or Password ?](#)

By signing in, you agree to our [Terms of Use](#).

Sign In

成功登入後，
便會進入課程主頁面



[BX0211]Thomas' Calculus 14E

Hi, Gau ▾ Sign Out Help

MyLab Math

- My Courses
- Manage Course >
- Course Home
- Assignments
- Study Plan
- Gradebook
- Pearson eText
- Chapter Contents >
- Tools for Success
- Multimedia Library
- Discussions
- Course Tools >
- Instructor Resources >

Course Home

Manage View ▾

[BX0211]Thomas' Calculus 14E

[View Instructor Home >](#)

[? Help](#)

--%

Current Entire Course To Date

< > July - August 2021 Today

View by 2 Weeks ▾

SUN	MON	TUE	WED	THU	FRI	SAT
25	26	27	28	29	30	31
1	2	3	4	5	6	7

Announcements (0) *No announcements during the selected timeframe.*

Past Due Assignments (0) *No past due assignments during the selected timeframe.*

Current Assignments (1)

AUG 5 **HOMEWORK-1** DUE AT 11:59 PM Score: -- 0 of 6 questions

Completed Assignments (0) *No completed assignments during the selected timeframe.*

This course ([BX0211]Thomas' Calculus 14E) is based on Hass, Thomas' Calculus, 14e in SI Units

如何進行指定的考試

2.

查看老師所指定的考試

點選課程主頁面左方的**Assignments**選項，即可看到指定的考試**FinalExam**，點選連結便可開始進行考試

Navigation icons: ☰ (top left), HI, GH ▾ Sign Out 🔔 Help (top right)

(for testing)_member course

MyLab Math

- My Courses
- Course Home
- Assignments**
- Study Plan
- Gradebook
- Chapter Contents >
- Tools for Success
- Multimedia Library
- Discussions
- Course Tools >

Assignments

Homework and Tests

All Assignments ▾ All Chapters ▾

All Assignments

Due	Assignment	Time Limit	Attempts	Gradebook Score
	Practice Only; No credit	20min	3 of ∞ incomplete	see score
	FinalExam	120min	1 of 1	see score

This course ((for testing)_member course) is based on Hass, Thomas' Calculus, 14e in SI Units

開始考試:

點選考試的連結後，即進入該份考試的說明頁。
請點選 Start Test，就開始進行考試。

Take a Test - Gau Lih - Google Chrome

mathxl.com/Student/PlayerTest.aspx?testId=235558070¢erwin=yes

[BX0211]Thomas' Calculus 14E

Gau Lih | 09/13/21 10:00 AM

Are you ready to start? Print Help

Test:	TEST-123
Questions:	8
Due:	09/14/21 11:59pm
Attempts:	0 of unlimited

This quiz **will** affect your Study Plan score.

Reminders
View a tutorial on how to enter your answers before starting.

Start Test Cancel

Using rectangles whose height is given by the value of the function at the

$$f(x) = x^3 \text{ between } x = 0 \text{ and } x = 2$$

then four rectangles.

點選< (或點選 >)
可以回到上一題(或下一題)

Using two rectangles to estimate, the area under $f(x)$ is approximately .
(Type an integer or a simplified fraction.)

Using four rectangles to estimate, the area under $f(x)$ is approximately .
(Type an integer or a simplified fraction.)

填答完，
請按此箭頭
進到下一題

Show completed

Check Answer

Next

Using rectangles each of whose height is given by the value of the function at the midpoint of the rectangle's base (the midpoint rule), estimate the area under the graph of the following function using first two and then four rectangles.

$$f(x) = \frac{4}{x} \text{ between } x = 3 \text{ and } x = 7$$

Using two rectangles, the estimate for the area under the curve is .
(Round to three decimal places as needed.)

Using four rectangles, the estimate for the area under the curve is .
(Round to three decimal places as needed.)

確認題目皆
填答完成後，
務必記得按下
Submit Quiz
才算完成考試。

提醒同學每一題填答完畢，請按下Next鍵進到下一題，直到作答至最後一題，最終按下Submit Quiz鍵，系統會跟同學做二次確認，若是誤按，可按下Cancel鍵繼續作答，但當同學再次點下Submit Quiz鍵後，即代表已繳卷，完成本次考試。

Show completed

Check Answer

Next



線上系統答題提醒：

(為確保考試作答順利，僅接受同學以桌機或筆電開啟本系統作答。)

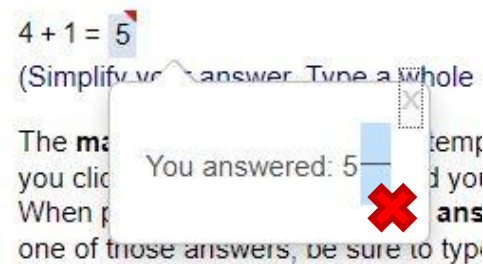
- 1) 同學進到會議室完成簽到後，請先行測試系統是否可以登入並顯示練習題目(Browser check)，等待考試時間到，FinalExam 顯示直接點選開始作答。

Browser check：確認瀏覽器有

1. 允許第三方cookie
2. 清除瀏覽器的cookie跟快取資料
3. 允許瀏覽器的彈出式視窗

- 2) 請依題目說明以限定的答案格式作答（例如分數、區間等），不符規定者將不予計分。

- 3) 使用系統內建方程式作答時，請留意作答欄位不要留空。



- 4) 同學使用鍵盤作答，注意只能輸入半形的英文、數字或符號。

- 5) 確認作答完成，務必按下 **Submit Quiz**。

What if I have a query about how to use MyLab?

當我使用 **MyLab** 平台遇到問題時該怎麼辦？

3.

培生數位產品技術支援

Pearson培生對數位產品非常好的技術支援，
有Q&A頁面可查詢 <https://support.pearson.com/getsupport/s/students>

遇到以下問題，先提供自行排解處理的方法，

- 1.忘記密碼或帳號被鎖住
- 2.無法登入平台
- 3.登入後，看不到課程畫面

尋求技術支援之前 - 忘記密碼或帳號鎖住

忘記密碼或帳號鎖住

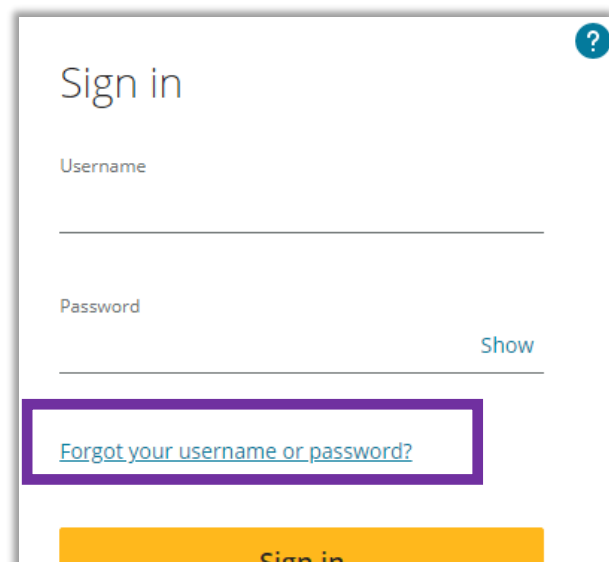
1. 點選 Forget your username or password?
2. 選Email，然後輸入email
3. 到信箱收信，並按信中步驟進行

預設

Username : 學號

Password :

NCU***** (*****為學號後五碼)



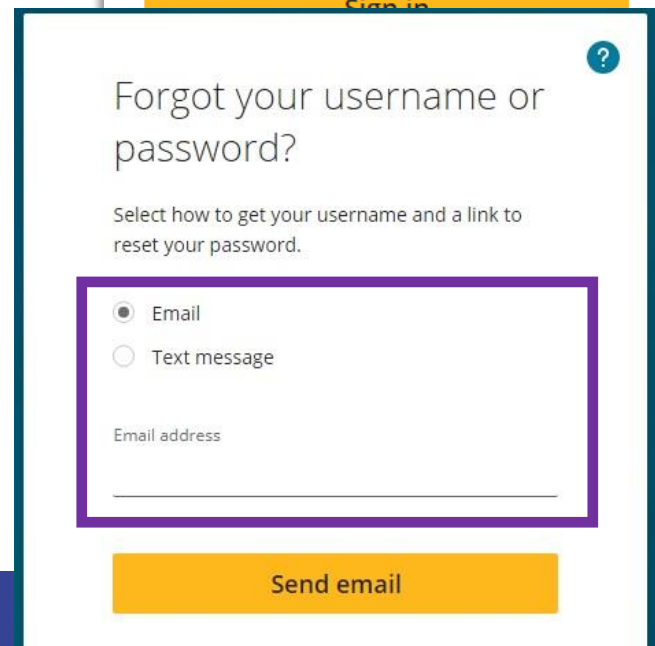
Sign in

Username

Password [Show](#)

[Forgot your username or password?](#)

Sign in



Forgot your username or password?

Select how to get your username and a link to reset your password.

Email
 Text message

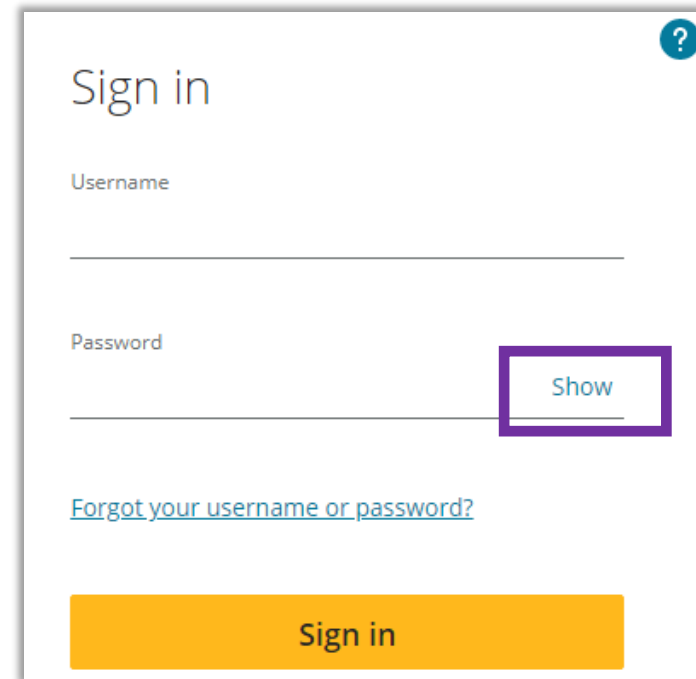
Email address

Send email

尋求技術支援之前 – 無法登入平台

無法登入平台

1. 通常是密碼打錯，請按 右邊的 **show**，顯示密碼
2. 確認瀏覽器有 **允許第三方cookie**
3. **清除**瀏覽器的 **cookie**資料



The image shows a sign-in form with the following elements:

- A "Sign in" title at the top right, accompanied by a question mark icon.
- A "Username" input field.
- A "Password" input field with a "Show" button to its right, which is highlighted with a purple border.
- A link: [Forgot your username or password?](#)
- A yellow "Sign in" button at the bottom.

尋求技術支援之前 - 看不到課程或畫面

登入平台，卻看不到課程或畫面

1. 請**確認**瀏覽器有允許**第三方cookie**

學校計中電腦大多預設封鎖**第三方cookie**

apple則多預設封鎖**第三方cookie**

2. **清除**瀏覽器的**cookie**跟**快取資料**

3. **允許**瀏覽器的**彈出式視窗**



全部顯示 ×

以上方式都不行，或是其他狀況

不包含不會作答

請妳/你撥打培生數位產品技術支援熱線，

或寄Email到培生數位產品技術支援電郵。

但要準備相關課程資訊，以便技術服務團隊可以迅速解決問題。
(迅速指的是24小時之內)

培生數位產品技術支援

您可透過以下方式聯繫取得相關服務：（可以中文書寫或溝通）

培生數位產品技術支援熱線：0800 676 686

培生數位產品技術支援電郵：itsupport.tw@pearson.com

免付費熱線服務時間：

週一至週五 上午7:00 - 晚上7:00，公休日除外。

（註：該服務團隊位於中國大陸，公休日以當地工作日為準）



Send Us a Message



Give Us a Call

尋求技術支援時所需提供資訊

1. 你的英文姓名、註冊E-mail電郵與帳號
2. 學校英文全名與課程細節：[National Central University](#)
老師的英文姓名：[Name](#)
原文書ISBN碼：[9781292253220](#)
Course ID：[Test](#)
教學平台：[Mastering Math](#)
3. E-mail中文描述您碰到的問題，以及請拍攝或擷取畫面。
若收到任何的英文錯誤訊息或代碼也請一起提供。

ALWAYS LEARNING